



# Arc of Soma LAGOON EDITION

Luxurious Residential Suites



Glistening on an idyllic peninsula under the Red Sea's year-round sun, Somabay is a paradise getaway famed for its clear sapphire waters, white sandy beaches and intricate tapestry of coral reefs, upping its exclusivity factor by mere topography.

01

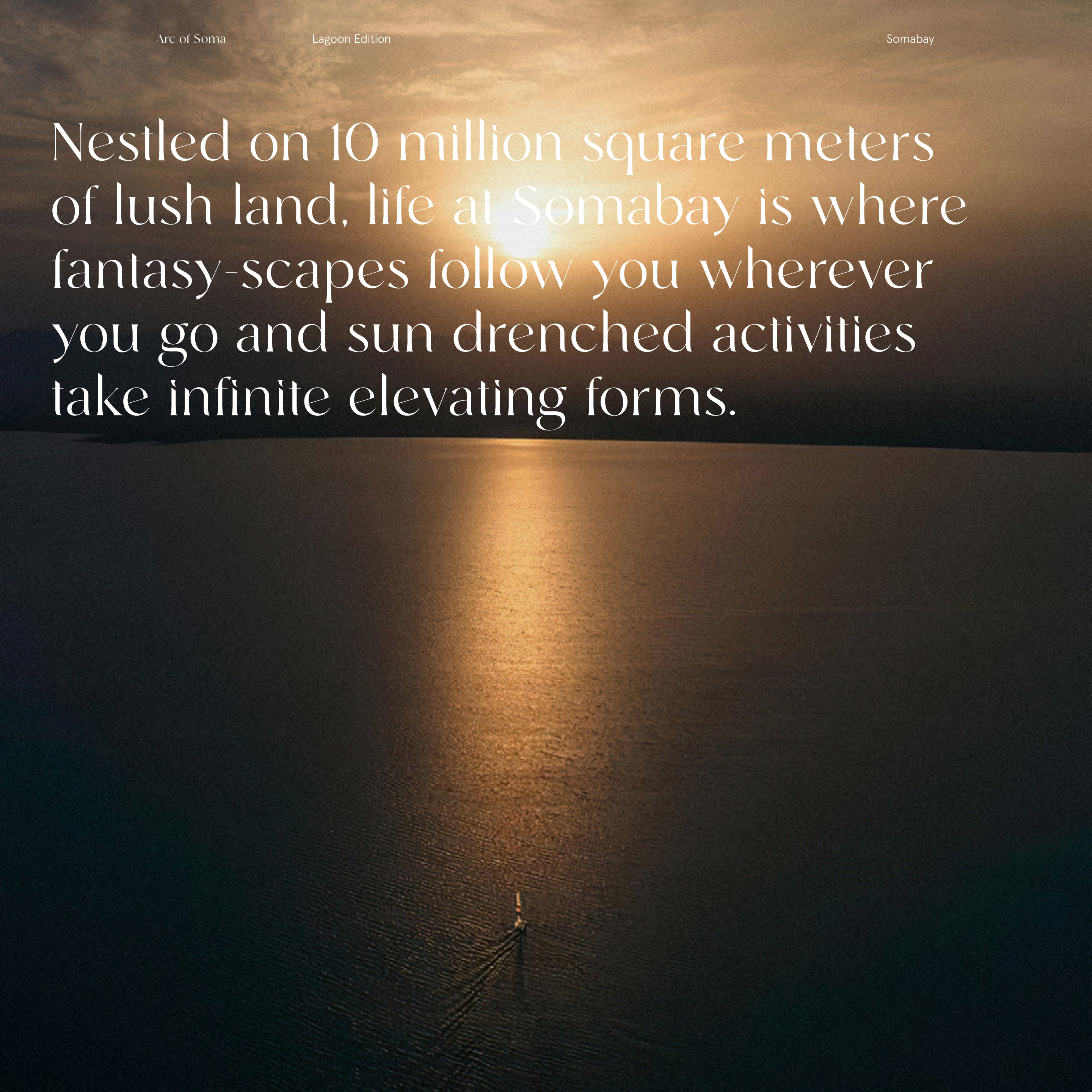


Expertly conceived to evoke a laid-back feeling, every aspect of the heavenly development is sympathetic to nature, painting colorful experiences around its lively marina and soul-soothing jetty, so you can take recharge or decelerate.

Home to 5 luxury resort hotels and a signature portfolio of residential properties, Somabay's one-of-a-kind settings with its full complement of premium amenities are the stage for incomparable experiences alongside friends and family.



Nestled on 10 million square meters of lush land, life at Somabay is where fantasy-scapes follow you wherever you go and sun drenched activities take infinite elevating forms.





Arc of Soma

# Crowning the Tip of Somabay's Peninsula

Arc of Soma Suites is expertly nestled at the tip of Somabay's peninsula, setting it as a unique sanctuary of calm where clear blue skies meet the open sea. The project's unrivaled location allows residents to forge an exclusive connection with virgin nature while enjoying contemporary living, thanks to modular designs that invite the outdoors inside.



Arc of Soma

04

\*Drone Image





Arc of Soma



Arc of Soma

Lagoon Edition

Somabay



# LAGOON EDITION



# Extending natural beauty With the 2nd largest Jetty in Somabay

Arc of Soma takes natural recreation to a whole new level with the second largest jetty in the destination, stretching on 285 meters into shimmering azure waters to promise tales of the sea yet to be told. Planned to be completed in 5 impressive months, the new extension acts as a lively anchor for residents of Arc of Soma looking to connect in breathtaking settings where the sun dips below the horizon, casting golden rays across the rippling surface. The extension intelligently complements the Soma Jetty in front of Breakers Hotel, opening airy room for cherished experiences to bloom where the sky meets the open sea.









# Somabay's Signature Acqua Lagoon

Arc of Soma Acqua Lagoon redefines water-front living from a signature perspective. Thoughtfully designed to boast large windows, your home invites generous intervals of daylight inside while inviting you to forge a direct connection with lagoon serenity from the comfort of your own living room.

Here, the community transforms into a canvas of azure blues and tranquil moments, where every single day feels like a celebration of nature's beauty.





# Arc of Soma Lagoon Edition Masterplan.



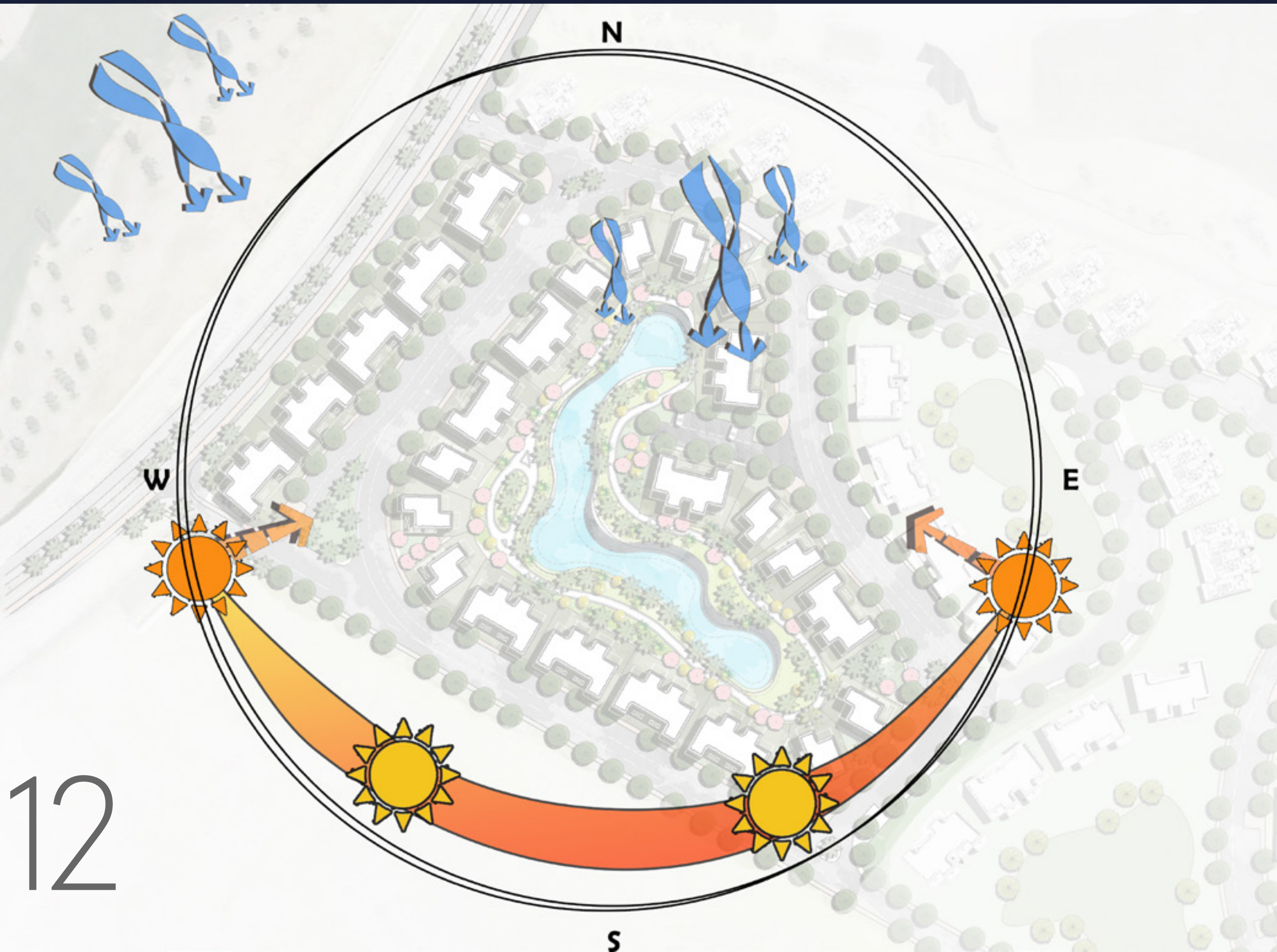


# Arc of Soma Lagoon Edition Masterplan.





# Sun & Wind



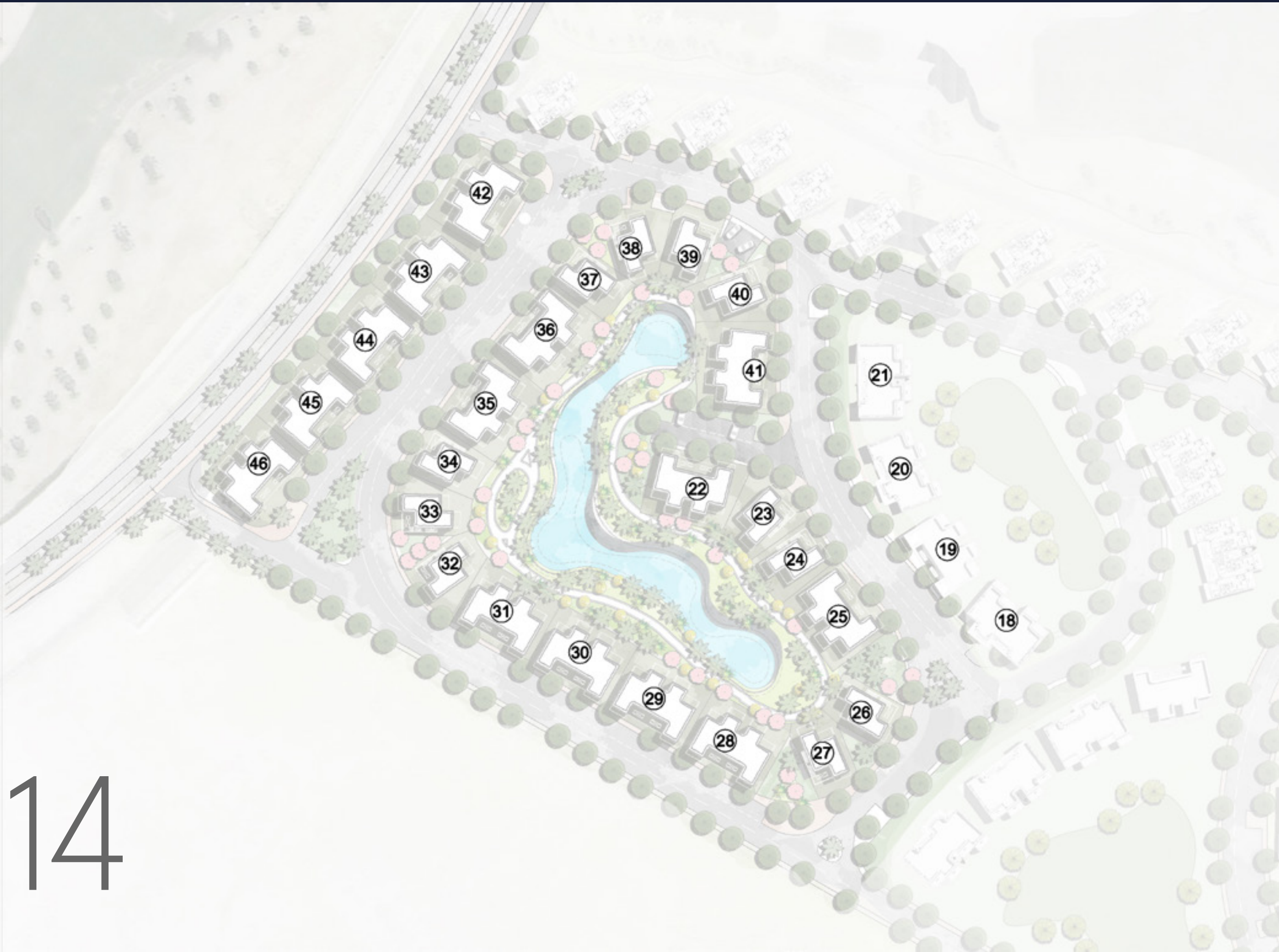


# Building Types





# Plots Numbering





# Levels





# From afar Arc of Soma Suites look like an iconic landmark.

Up close, the contemporary modular design lends each building its aesthetically pleasing appeal to carve new standards in world-class elegance by the sea. Designed with nature and modern-day functionality in mind, Arc of Soma Suites boast sleek glass facades that open onto infinite sea views while enjoying a staggered alchemy to ensure utmost privacy for all residents alike.

















Arc of Soma

Lagoon Edition

Somabay













Unit Type

—

# Grand Suite

Available Only on Ground Floor

23



Arc of Soma

Lagoon Edition

Somabay





Arc of Soma

Lagoon Edition

Somabay





Arc of Soma

Lagoon Edition

Somabay





Arc of Soma

Lagoon Edition

Somabay





Arc of Soma

Lagoon Edition

Somabay





Arc of Soma

Lagoon Edition

Somabay





Floorplan.

# Grand Suite

Unit Area  
151.40 m<sup>2</sup>

Terrace  
20.00 m<sup>2</sup>

Living Area  
4.55 × 4.65

Master Bedroom  
4.55 × 3.60

Master Bathroom  
3.20 × 1.70

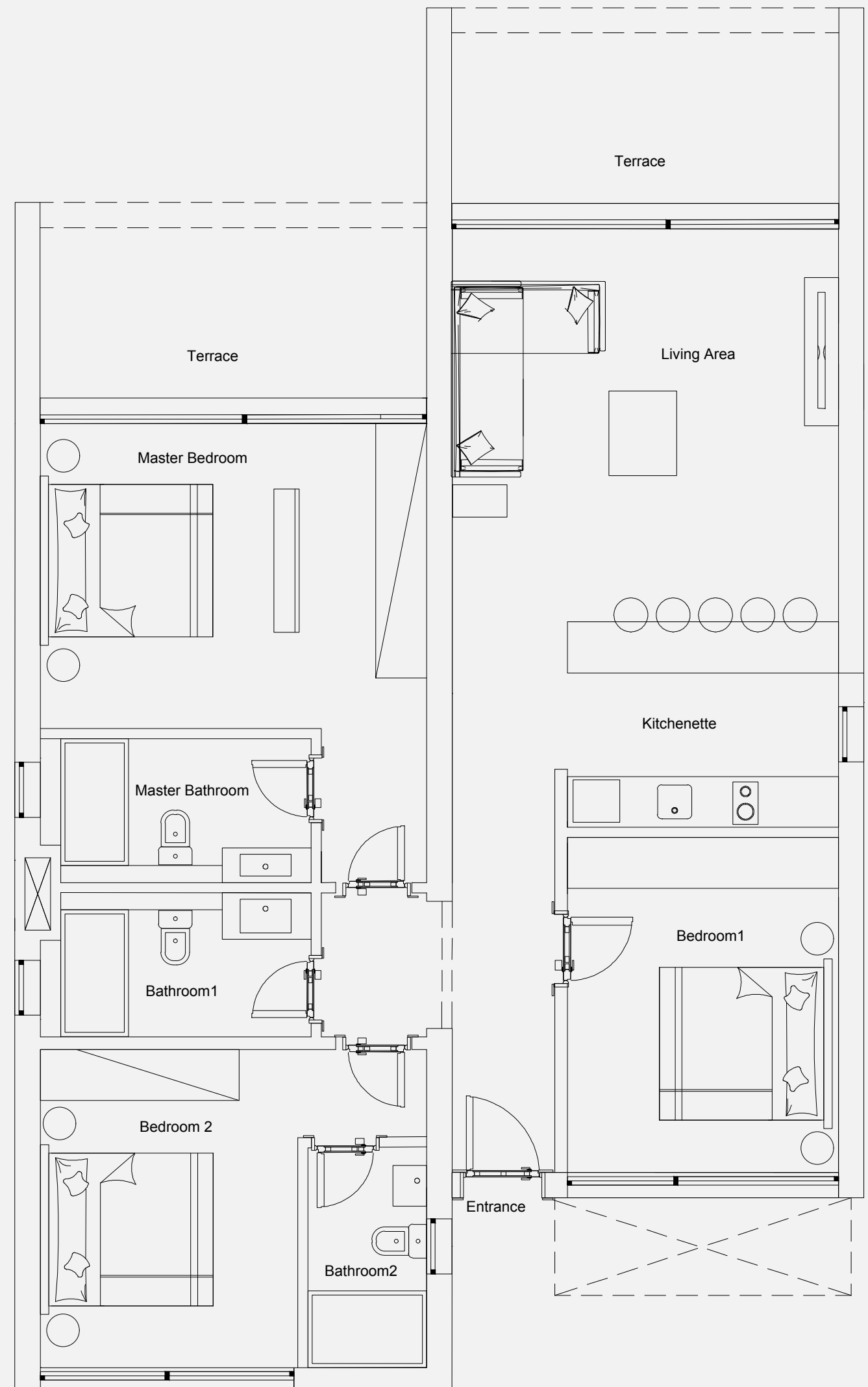
Kitchenette  
3.20 × 2.40

Bedroom 1  
3.20 × 3.95

Bathroom 1  
3.20 × 1.70

Bedroom 2  
3.04 × 3.75

Bathroom 2  
1.40 × 2.60



# 30

**DISCLAIMER:** The information and design on this brochure provided is indicative. The developer reserves the right to change including but not limited to the description of a plot, dimensions, floor plan materials, a photo, elevation, adjacent properties, amenities, design guidelines, colors, stairs, terrace details areas and masterplan. Further the actual design / construction may vary in fit and finish from the one displayed in the information and material displayed on this brochure. The masterplan is shown for the purpose of providing an impression of the project, as well as the approximate location and orientation of units. This brochure does not constitute a legal binding obligation, and no representation or warranty is expressly or impliedly given as to its accuracy, completeness. Any information shall not be effective or valid unless made in writing and signed by virtue of a Contract.



Unit Type

—

# Single Suite

Available on Ground or First Floor



Arc of Soma

Lagoon Edition

Somabay









Arc of Soma

Lagoon Edition

Somabay





Arc of Soma

Lagoon Edition

Somabay





Floorplan.

# Single Suite

Ground Floor

Unit Area

76.00 m<sup>2</sup>

Terrace

10.00 m<sup>2</sup>

Living Area

4.55 × 5.35

Master Bedroom

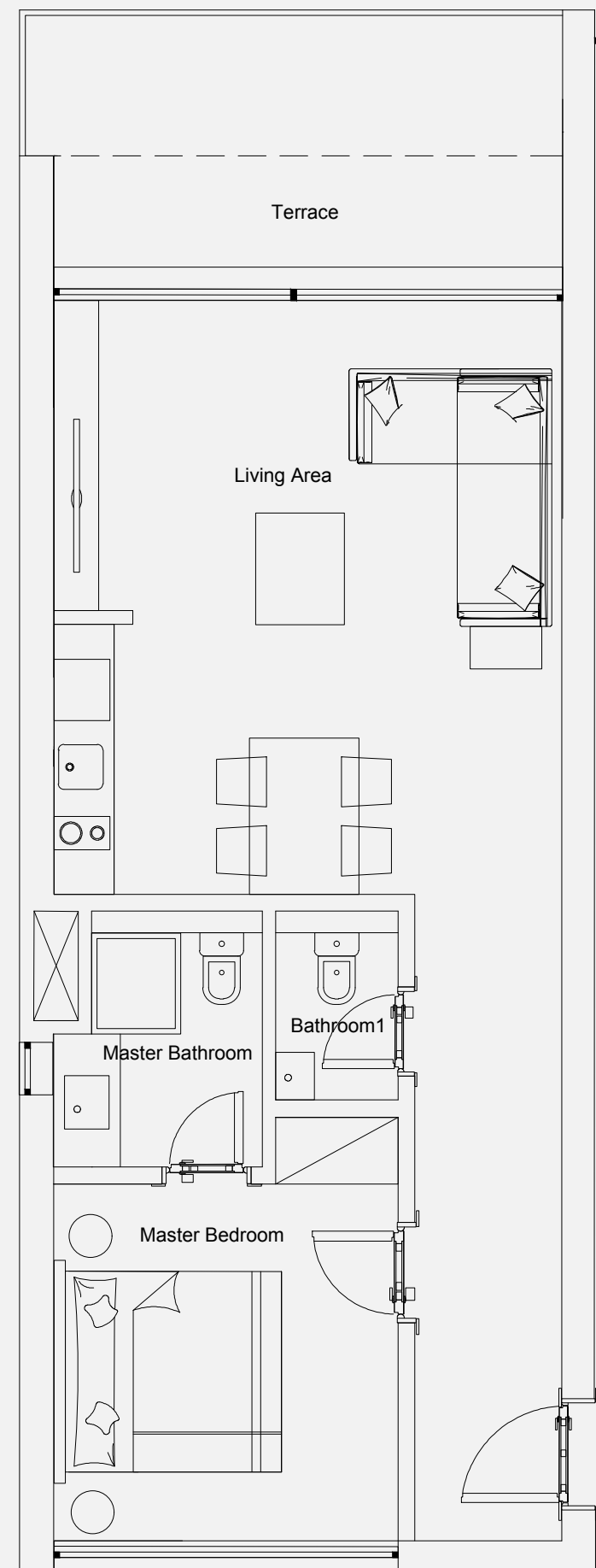
3.10 × 3.20

Master Bathroom

1.85 × 2.30

Bathroom

1.10 × 1.70



# 36

**DISCLAIMER:** The information and design on this brochure provided is indicative. The developer reserves the right to change including but not limited to the description of a plot, dimensions, floor plan materials, a photo, elevation, adjacent properties, amenities, design guidelines, colors, stairs, terrace details areas and masterplan. Further the actual design / construction may vary in fit and finish from the one displayed in the information and material displayed on this brochure. The masterplan is shown for the purpose of providing an impression of the project, as well as the approximate location and orientation of units. This brochure does not constitute a legal binding obligation, and no representation or warranty is expressly or impliedly given as to its accuracy, completeness. Any information shall not be effective or valid unless made in writing and signed by virtue of a Contract.



Floorplan.

# Single Suite

First Floor

Unit Area  
71.00 m<sup>2</sup>

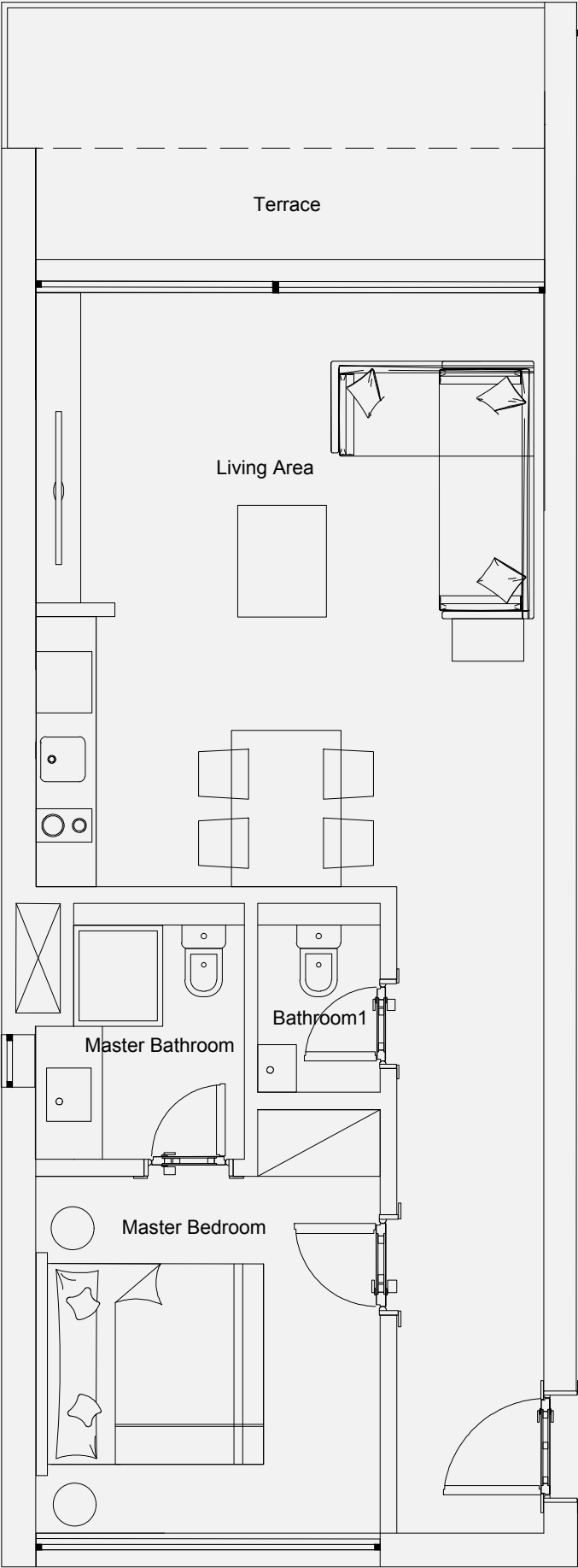
Terrace  
5.00 m<sup>2</sup>

Living Area  
4.55 × 5.35

Master Bedroom  
3.10 × 3.20

Master Bathroom  
1.85 × 2.30

Bathroom  
1.10 × 1.70





Unit Type

—

# Duplex Penthouse

Available on First/Second Floor

38



Arc of Soma

Lagoon Edition

Somabay









Arc of Soma

Lagoon Edition

Somabay





Arc of Soma

Lagoon Edition

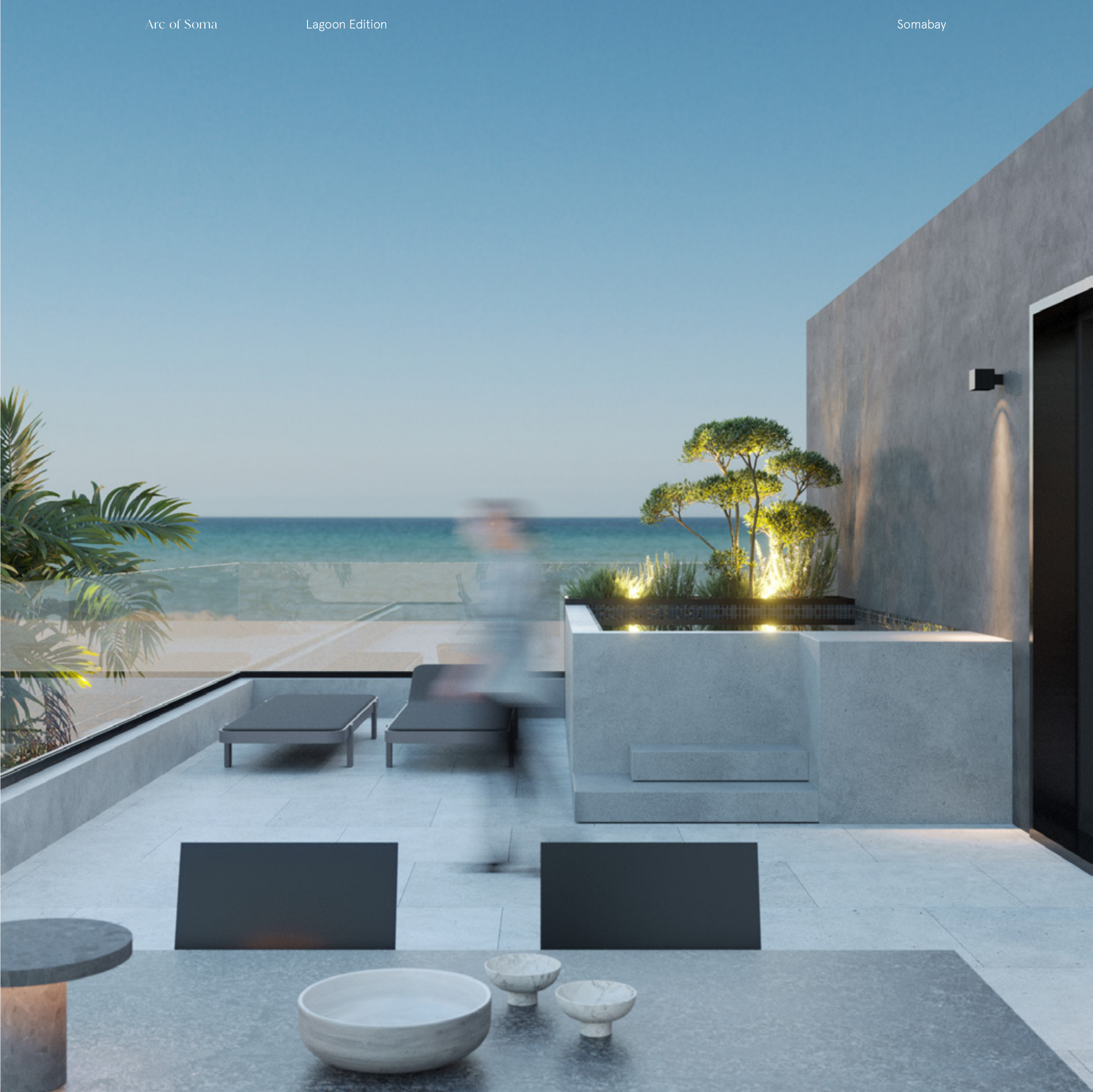
Somabay

















Floorplan.

# Duplex Penthouse

First Floor

Unit Area  
145.00 m<sup>2</sup>

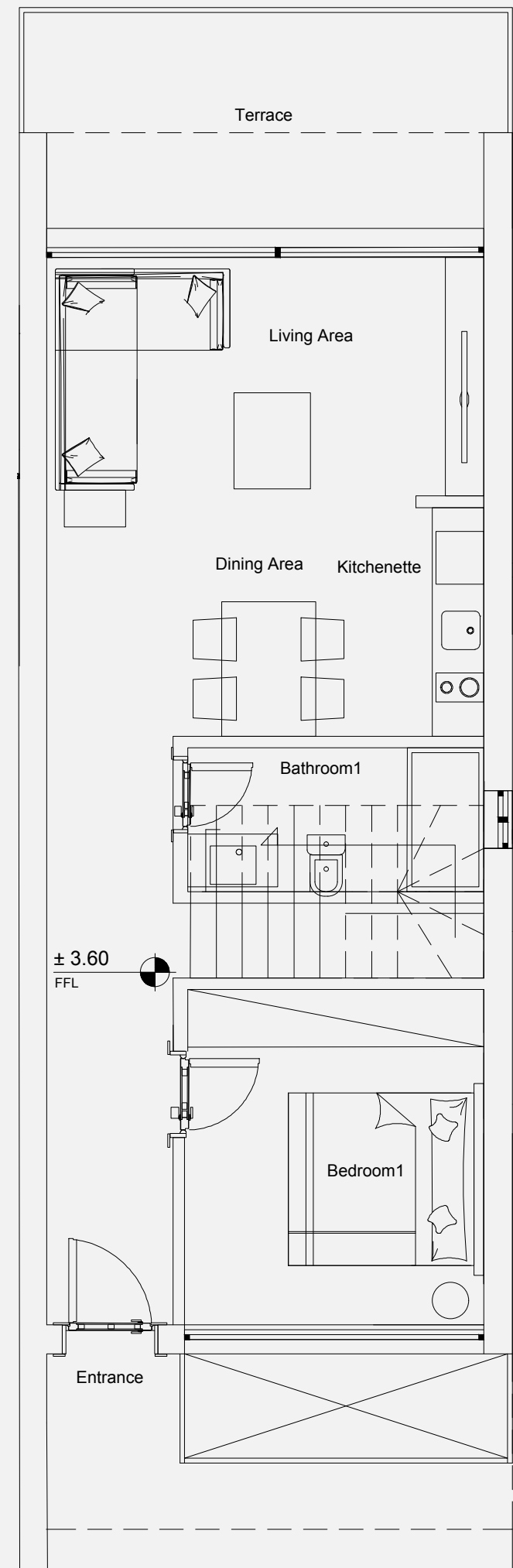
Roof Terrace  
62.00 m<sup>2</sup>

Living Area  
4.55 × 2.60

Dining Area  
4.55 × 2.40

Bedroom 1  
3.10 × 3.50

Bathroom  
3.10 × 1.50



# 46

**DISCLAIMER:** The information and design on this brochure provided is indicative. The developer reserves the right to change including but not limited to the description of a plot, dimensions, floor plan materials, a photo, elevation, adjacent properties, amenities, design guidelines, colors, stairs, terrace details areas and masterplan. Further the actual design / construction may vary in fit and finish from the one displayed in the information and material displayed on this brochure. The masterplan is shown for the purpose of providing an impression of the project, as well as the approximate location and orientation of units. This brochure does not constitute a legal binding obligation, and no representation or warranty is expressly or impliedly given as to its accuracy, completeness. Any information shall not be effective or valid unless made in writing and signed by virtue of a Contract.



Floorplan

Duplex Penthouse

Second Floor + Roof

Unit Area  
145.00 m<sup>2</sup>

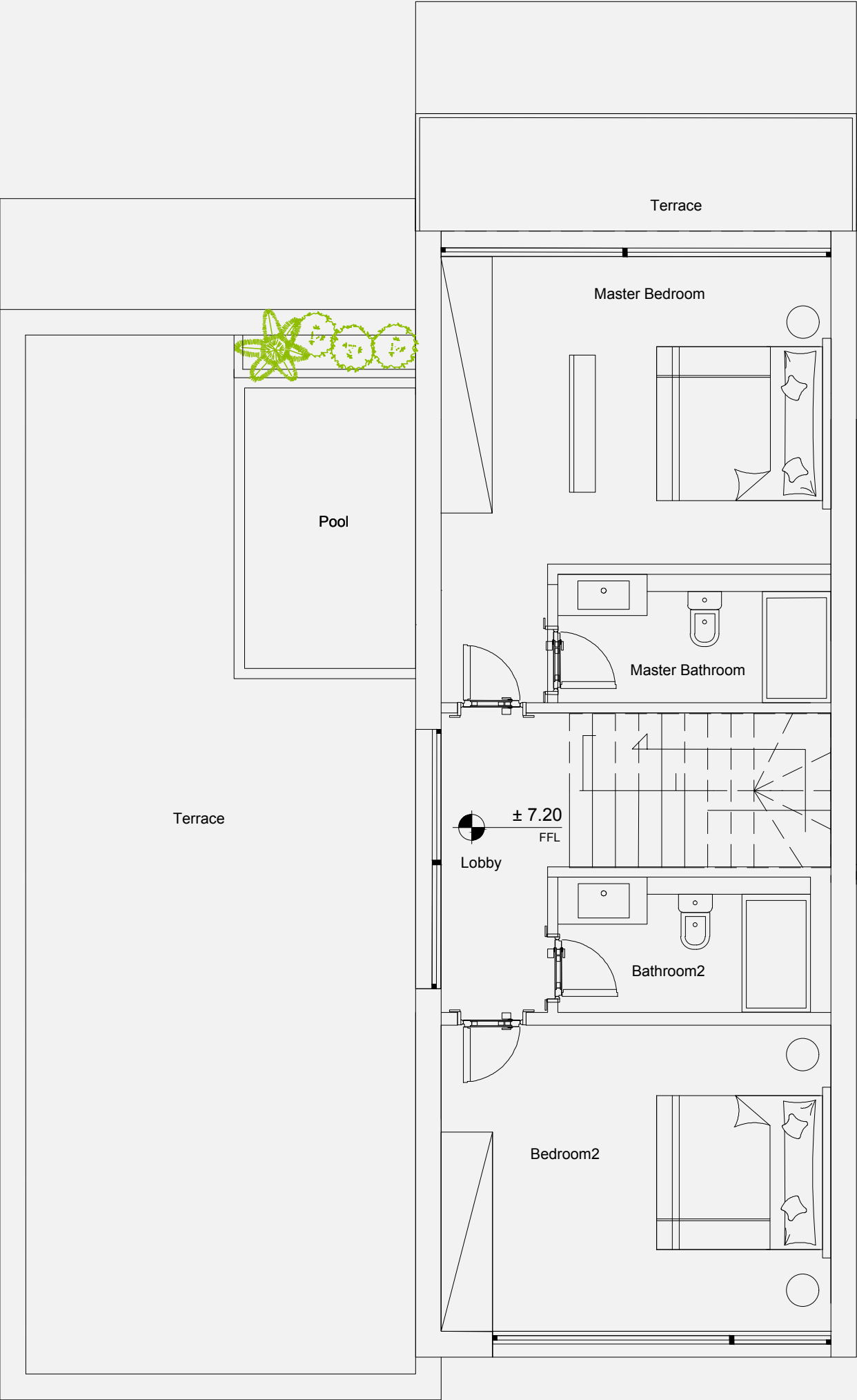
Roof Terrace  
62.00 m<sup>2</sup>

Master Bedroom  
4.55 × 3.60

Bedroom 2  
4.55 × 3.60

Master Bathroom  
3.20 × 1.50

Bathroom 2  
3.20 × 1.60





# Building Type One.



Building Type 1

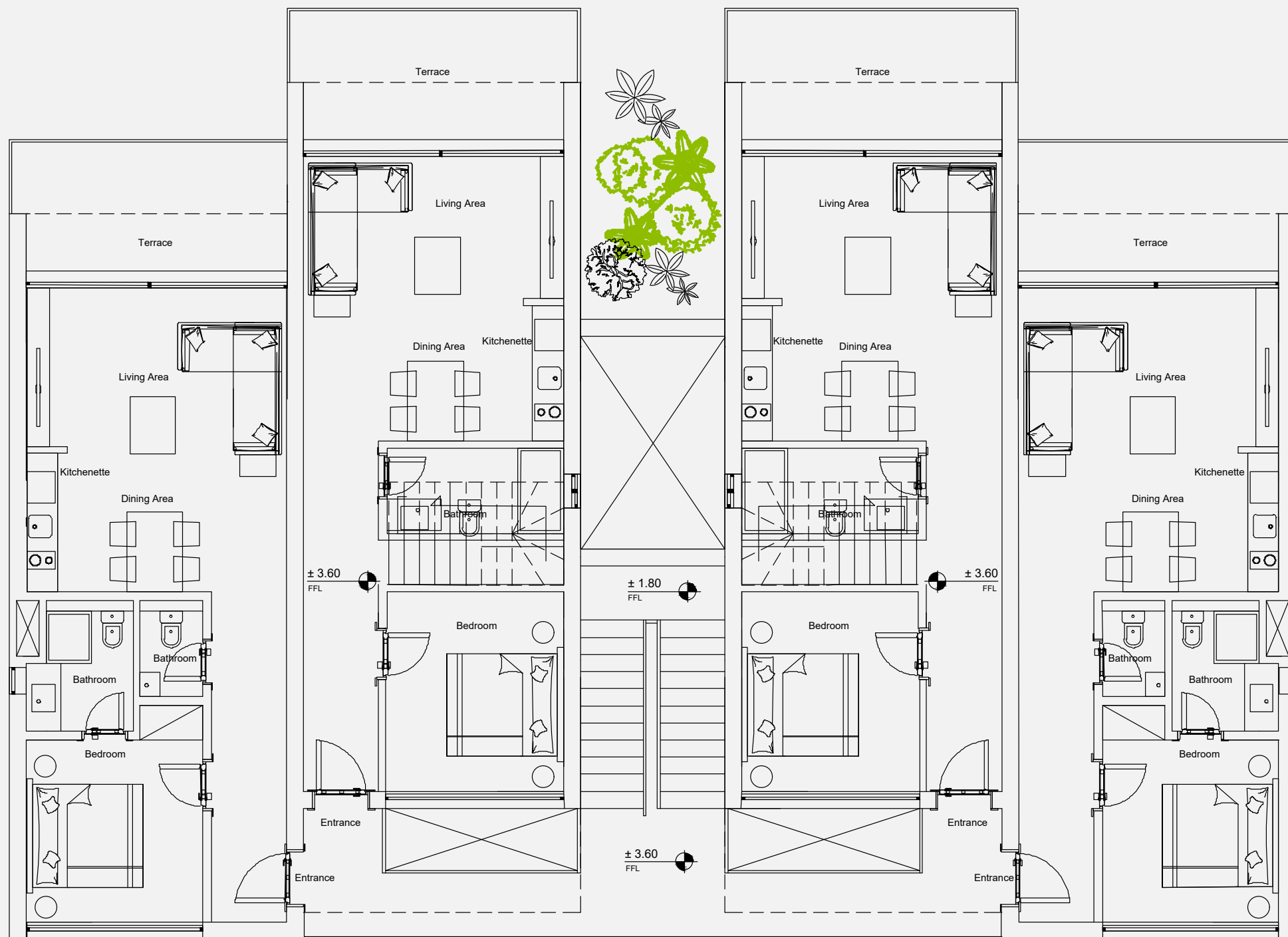
# Ground Floor





Building Type 1

## First Floor



50

**DISCLAIMER:** The information and design on this brochure provided is indicative. The developer reserves the right to change including but not limited to the description of a plot, dimensions, floor plan materials, a photo, elevation, adjacent properties, amenities, design guidelines, colors, stairs, terrace details areas and masterplan. Further the actual design / construction may vary in fit and finish from the one displayed in the information and material displayed on this brochure. The masterplan is shown for the purpose of providing an impression of the project, as well as the approximate location and orientation of units. This brochure does not constitute a legal binding obligation, and no representation or warranty is expressly or impliedly given as to its accuracy, completeness. Any information shall not be effective or valid unless made in writing and signed by virtue of a Contract.



Building Type 1

# Second Floor + Roof





# Building Type Two.



## Building Type 2

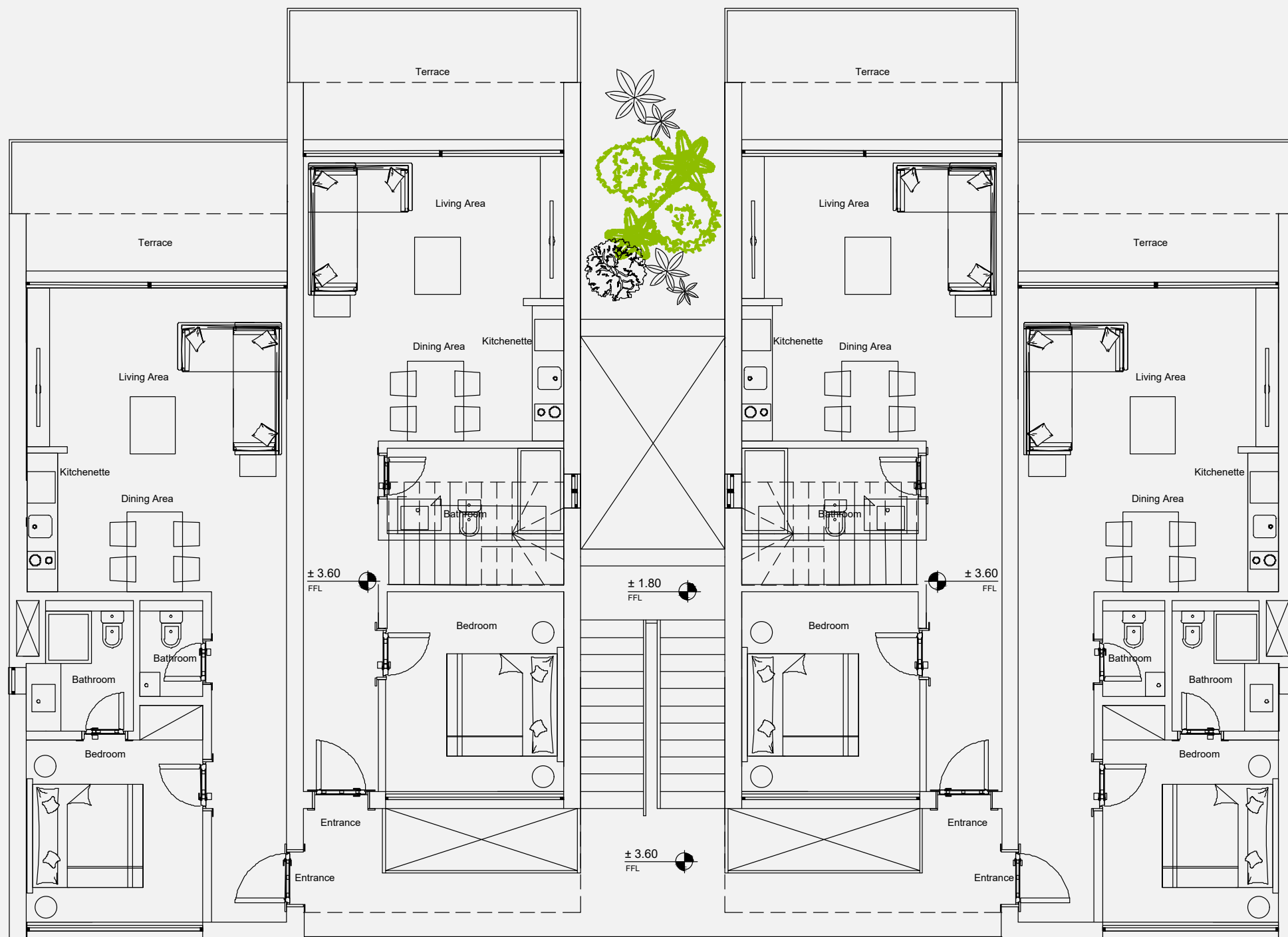
## Ground Floor





Building Type 2

## First Floor



54

**DISCLAIMER:** The information and design on this brochure provided is indicative. The developer reserves the right to change including but not limited to the description of a plot, dimensions, floor plan materials, a photo, elevation, adjacent properties, amenities, design guidelines, colors, stairs, terrace details areas and masterplan. Further the actual design / construction may vary in fit and finish from the one displayed in the information and material displayed on this brochure. The masterplan is shown for the purpose of providing an impression of the project, as well as the approximate location and orientation of units. This brochure does not constitute a legal binding obligation, and no representation or warranty is expressly or impliedly given as to its accuracy, completeness. Any information shall not be effective or valid unless made in writing and signed by virtue of a Contract.



Building Type 2

# Second Floor + Roof



# 55

**DISCLAIMER:** The information and design on this brochure provided is indicative. The developer reserves the right to change including but not limited to the description of a plot, dimensions, floor plan materials, a photo, elevation, adjacent properties, amenities, design guidelines, colors, stairs, terrace details areas and masterplan. Further the actual design / construction may vary in fit and finish from the one displayed in the information and material displayed on this brochure. The masterplan is shown for the purpose of providing an impression of the project, as well as the approximate location and orientation of units. This brochure does not constitute a legal binding obligation, and no representation or warranty is expressly or impliedly given as to its accuracy, completeness. Any information shall not be effective or valid unless made in writing and signed by virtue of a Contract.

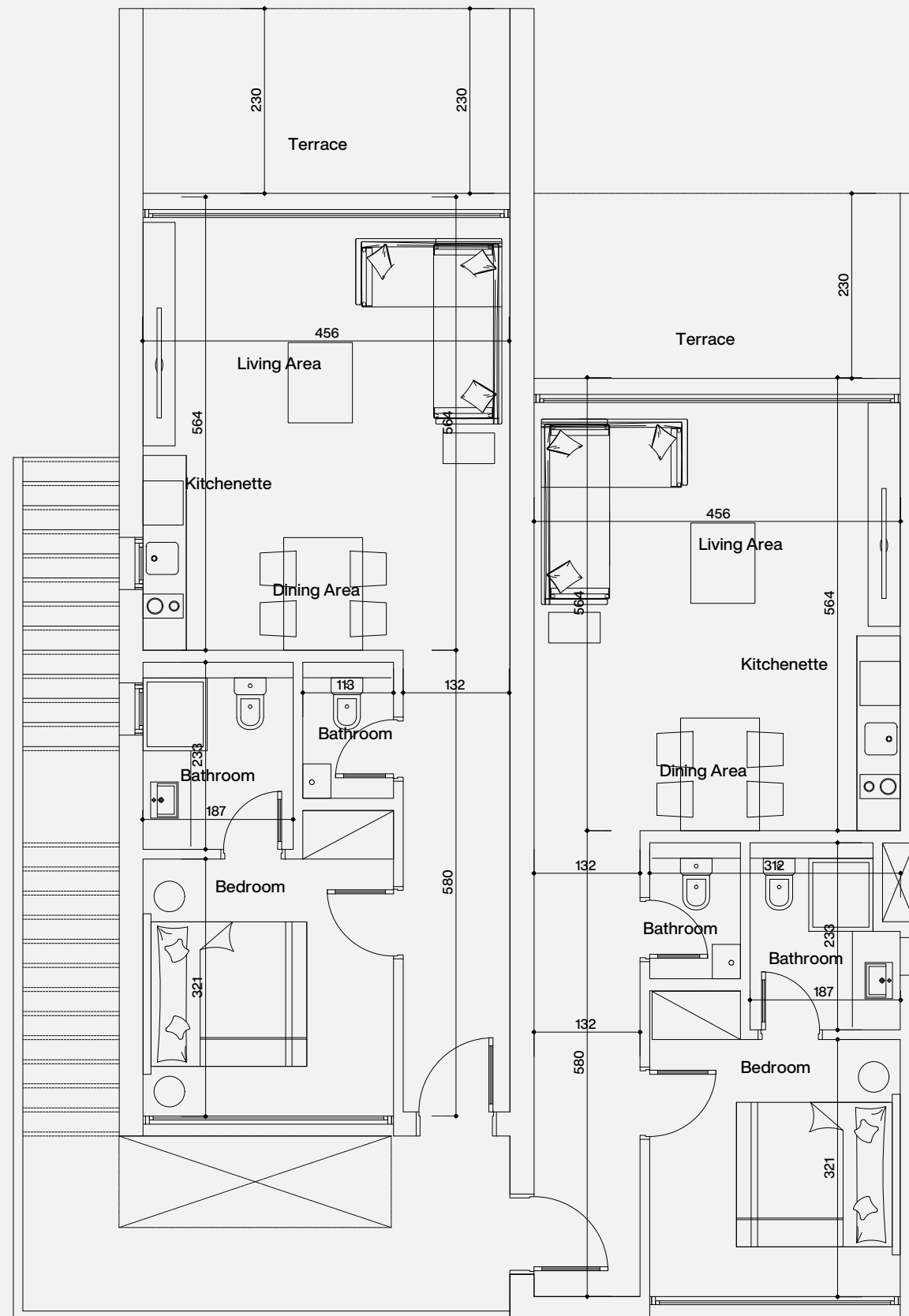


# Building Type Three.



Building Type 3

## Ground Floor



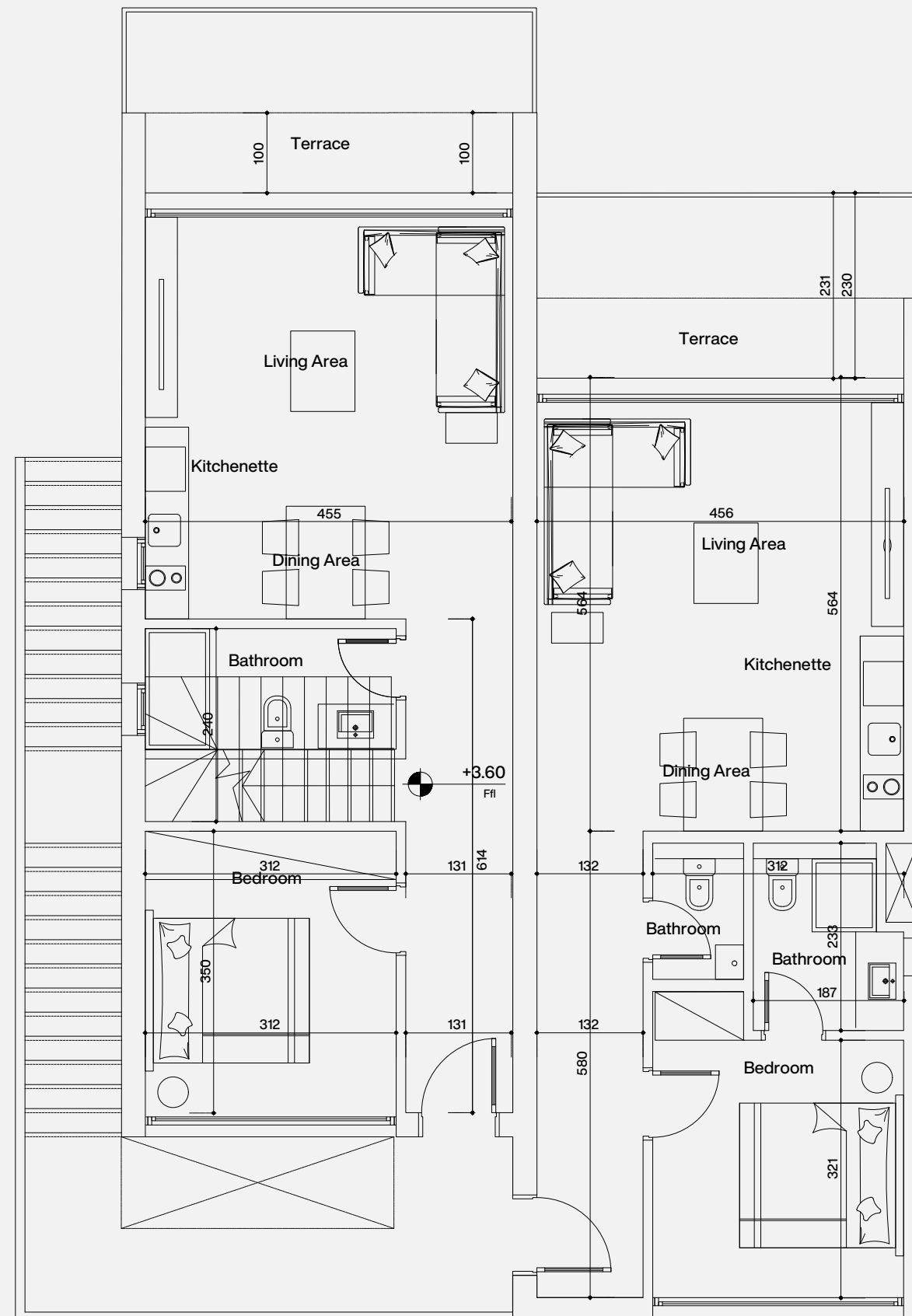
57

**DISCLAIMER:** The information and design on this brochure provided is indicative. The developer reserves the right to change including but not limited to the description of a plot, dimensions, floor plan materials, a photo, elevation, adjacent properties, amenities, design guidelines, colors, stairs, terrace details areas and masterplan. Further the actual design / construction may vary in fit and finish from the one displayed in the information and material displayed on this brochure. The masterplan is shown for the purpose of providing an impression of the project, as well as the approximate location and orientation of units. This brochure does not constitute a legal binding obligation, and no representation or warranty is expressly or impliedly given as to its accuracy, completeness. Any information shall not be effective or valid unless made in writing and signed by virtue of a Contract.



Building Type 3

## First Floor



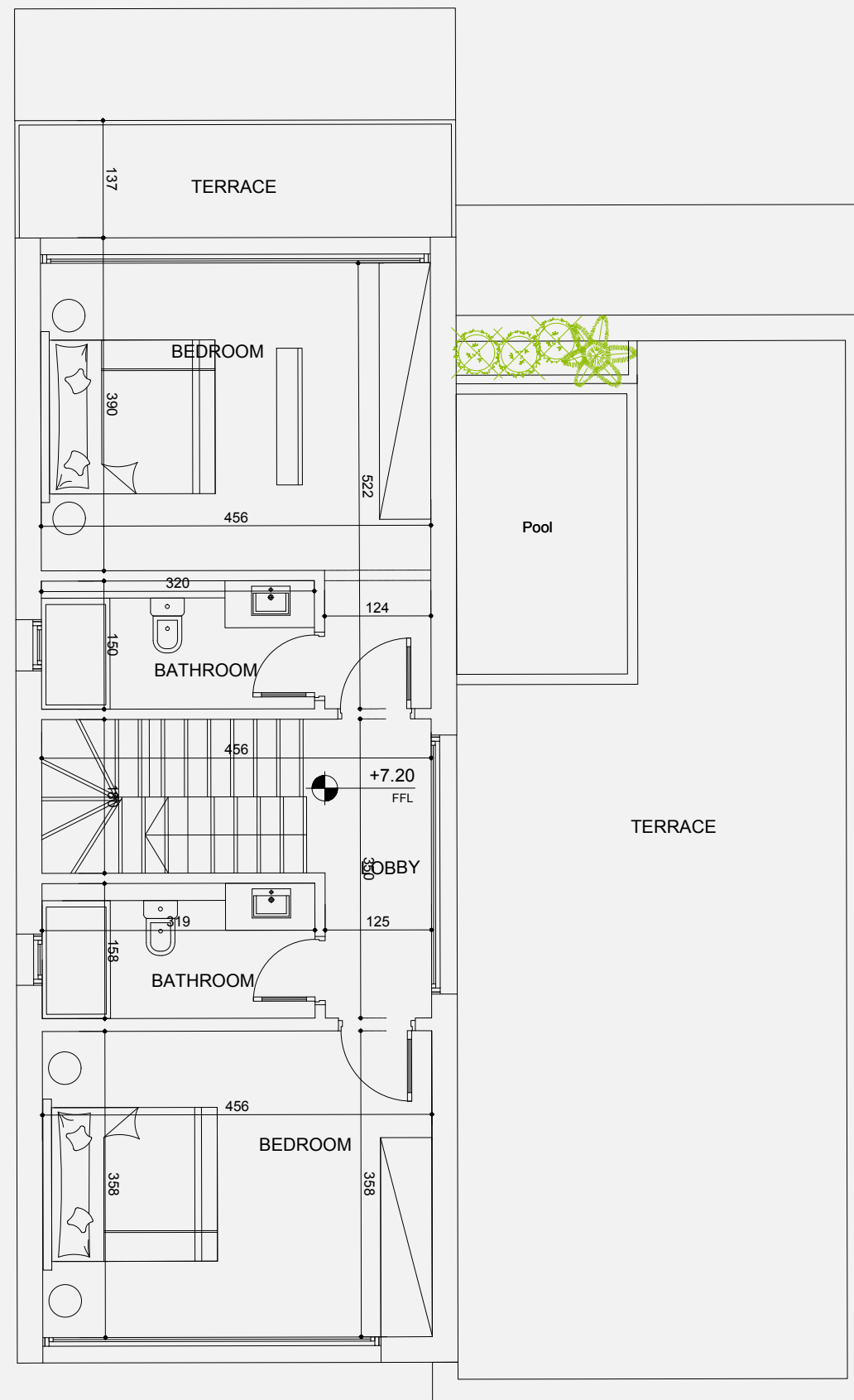
58

**DISCLAIMER:** The information and design on this brochure provided is indicative. The developer reserves the right to change including but not limited to the description of a plot, dimensions, floor plan materials, a photo, elevation, adjacent properties, amenities, design guidelines, colors, stairs, terrace details areas and masterplan. Further the actual design / construction may vary in fit and finish from the one displayed in the information and material displayed on this brochure. The masterplan is shown for the purpose of providing an impression of the project, as well as the approximate location and orientation of units. This brochure does not constitute a legal binding obligation, and no representation or warranty is expressly or impliedly given as to its accuracy, completeness. Any information shall not be effective or valid unless made in writing and signed by virtue of a Contract.



Building Type 3

# Second Floor



# 59

**DISCLAIMER:** The information and design on this brochure provided is indicative. The developer reserves the right to change including but not limited to the description of a plot, dimensions, floor plan materials, a photo, elevation, adjacent properties, amenities, design guidelines, colors, stairs, terrace details areas and masterplan. Further the actual design / construction may vary in fit and finish from the one displayed in the information and material displayed on this brochure. The masterplan is shown for the purpose of providing an impression of the project, as well as the approximate location and orientation of units. This brochure does not constitute a legal binding obligation, and no representation or warranty is expressly or impliedly given as to its accuracy, completeness. Any information shall not be effective or valid unless made in writing and signed by virtue of a Contract.

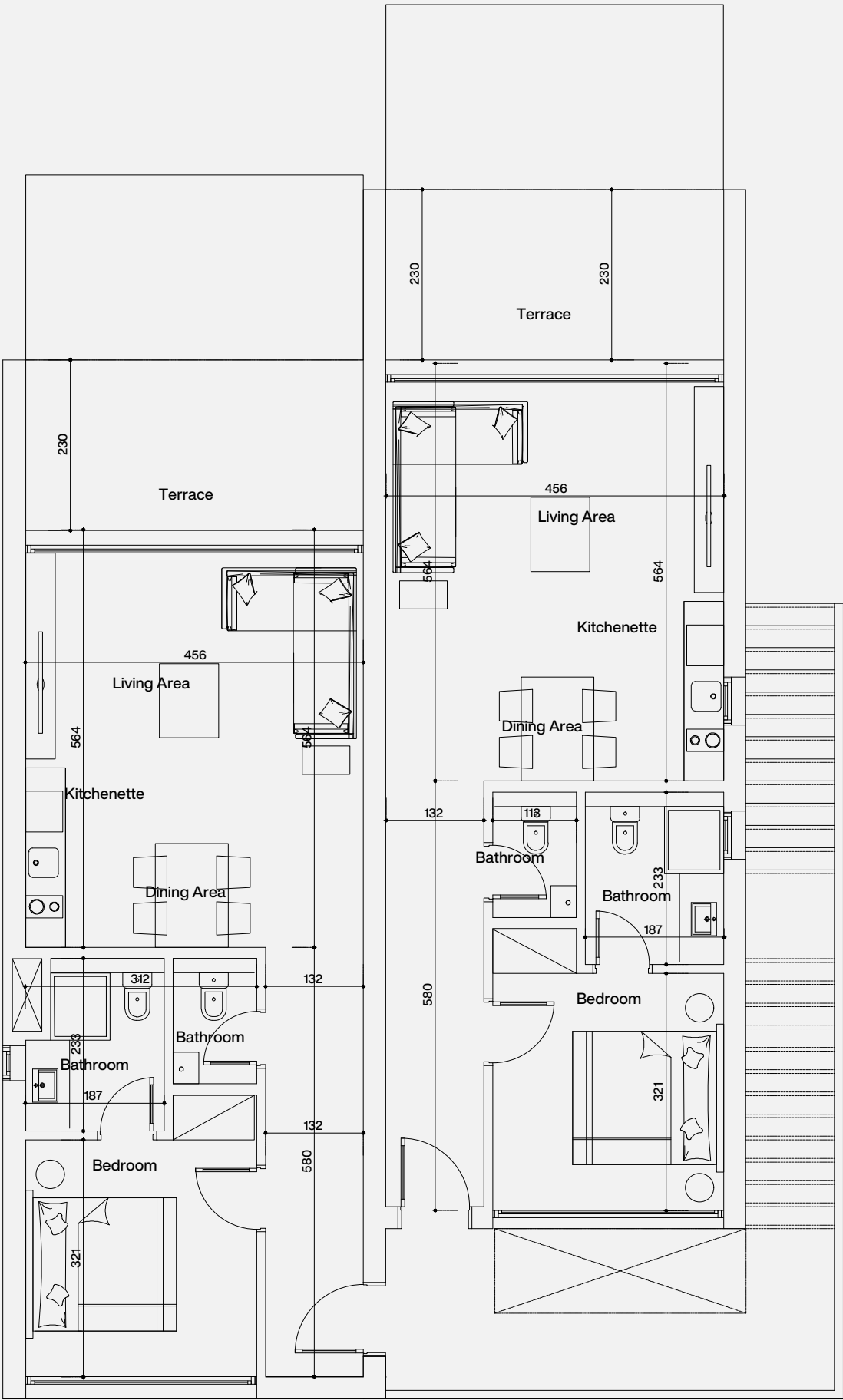


# Building Type Four.



Building Type 4

# Ground Floor



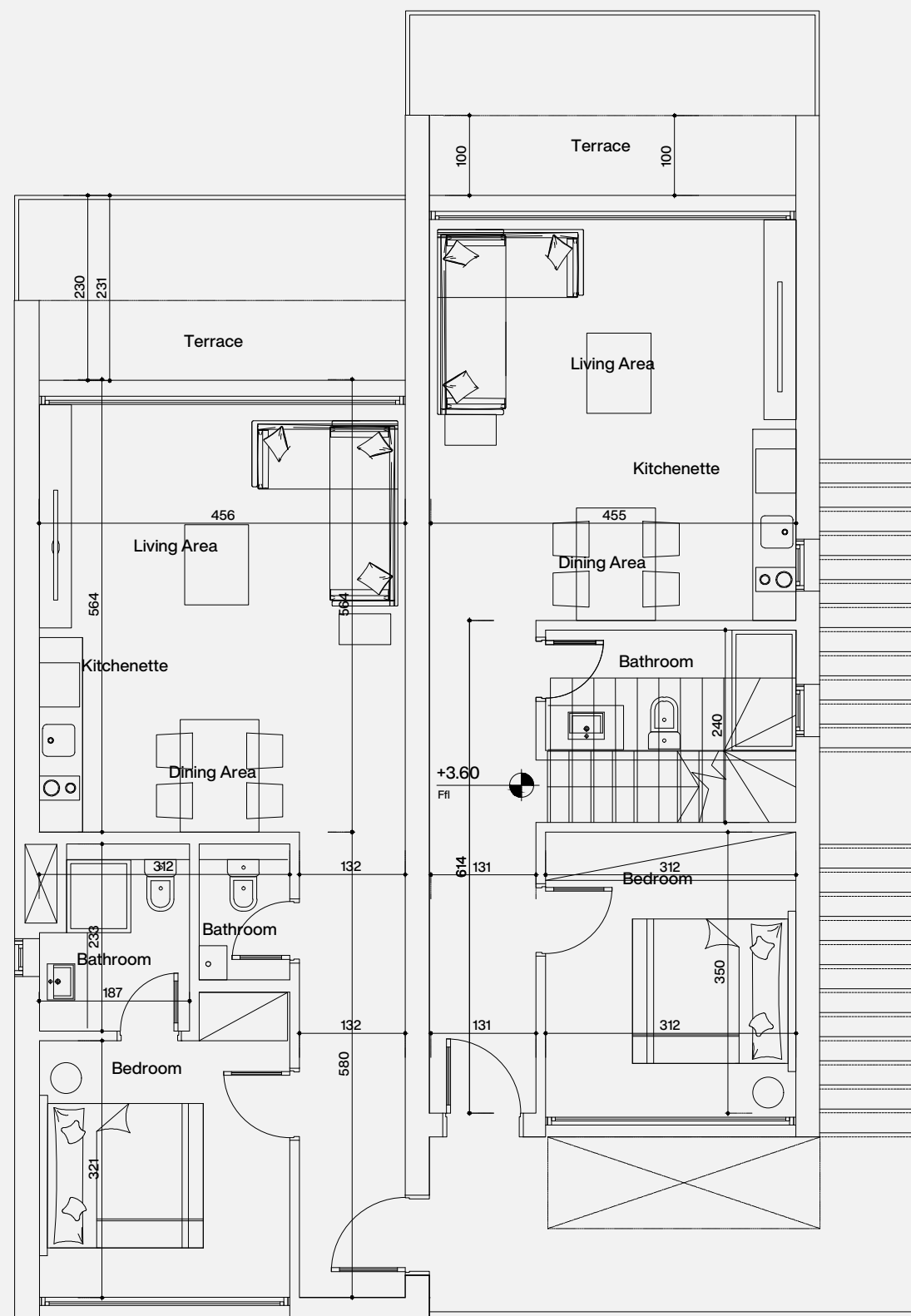
61

**DISCLAIMER:** The information and design on this brochure provided is indicative. The developer reserves the right to change including but not limited to the description of a plot, dimensions, floor plan materials, a photo, elevation, adjacent properties, amenities, design guidelines, colors, stairs, terrace details areas and masterplan. Further the actual design / construction may vary in fit and finish from the one displayed in the information and material displayed on this brochure. The masterplan is shown for the purpose of providing an impression of the project, as well as the approximate location and orientation of units. This brochure does not constitute a legal binding obligation, and no representation or warranty is expressly or impliedly given as to its accuracy, completeness. Any information shall not be effective or valid unless made in writing and signed by virtue of a Contract.



Building Type 4

## First Floor



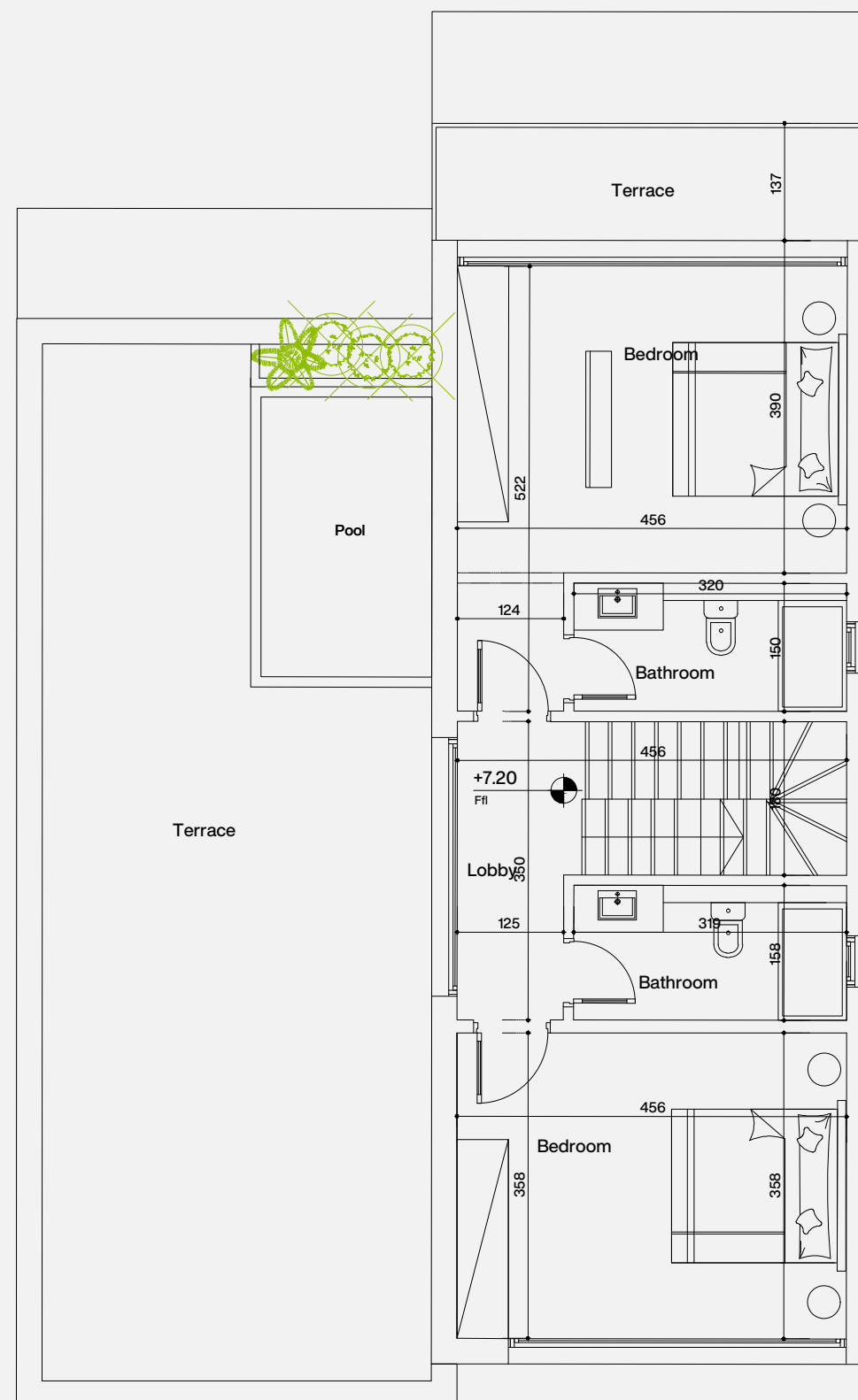
62

**DISCLAIMER:** The information and design on this brochure provided is indicative. The developer reserves the right to change including but not limited to the description of a plot, dimensions, floor plan materials, a photo, elevation, adjacent properties, amenities, design guidelines, colors, stairs, terrace details areas and masterplan. Further the actual design / construction may vary in fit and finish from the one displayed in the information and material displayed on this brochure. The masterplan is shown for the purpose of providing an impression of the project, as well as the approximate location and orientation of units. This brochure does not constitute a legal binding obligation, and no representation or warranty is expressly or impliedly given as to its accuracy, completeness. Any information shall not be effective or valid unless made in writing and signed by virtue of a Contract.



Building Type 4

## Second Floor



63

**DISCLAIMER:** The information and design on this brochure provided is indicative. The developer reserves the right to change including but not limited to the description of a plot, dimensions, floor plan materials, a photo, elevation, adjacent properties, amenities, design guidelines, colors, stairs, terrace details areas and masterplan. Further the actual design / construction may vary in fit and finish from the one displayed in the information and material displayed on this brochure. The masterplan is shown for the purpose of providing an impression of the project, as well as the approximate location and orientation of units. This brochure does not constitute a legal binding obligation, and no representation or warranty is expressly or impliedly given as to its accuracy, completeness. Any information shall not be effective or valid unless made in writing and signed by virtue of a Contract.



# Somabay Experience



# An Exciting Itinerary for the Whole Family.

Start your day by teeing off at Somabay Championship Golf Course then unwind at the award winning Cascades Spa and Thalasso and allow the healing powers of the Red Sea to restore balance to your body and soul.

For the more adventurous, ORCA Dive Centre invites you to uncover the untapped wonders of Egypt's marine life at the site's colorful House Reef. Kite surfing lovers can spend a serene afternoon gliding across flat waters at 7Bft —one of the top 3 kite surfing spots in the world- followed by a world-class dining experience at any of the destination's signature restaurants.

Blessed with dry desert winds, low humidity and a front-row seat on immaculate sea views, Somabay dictates an exciting itinerary for the whole family, transforming your everyday reality into a waking dream.





# The Somabay Championship Golf Course.

Opening onto spectacular 360 degree views of lush golf greens, azure Red Sea hues and earthy desert tones, The Somabay 18 hole, par 72 Championship Golf Course is designed by legendary golfer Gary Player to ignite guests' love for the sport. Ranked as one of the leading golf courses in Africa, The Somabay Championship Golf Course boasts a state-of-the-art academy, guaranteeing non-stop excitement for amateurs and professionals alike.

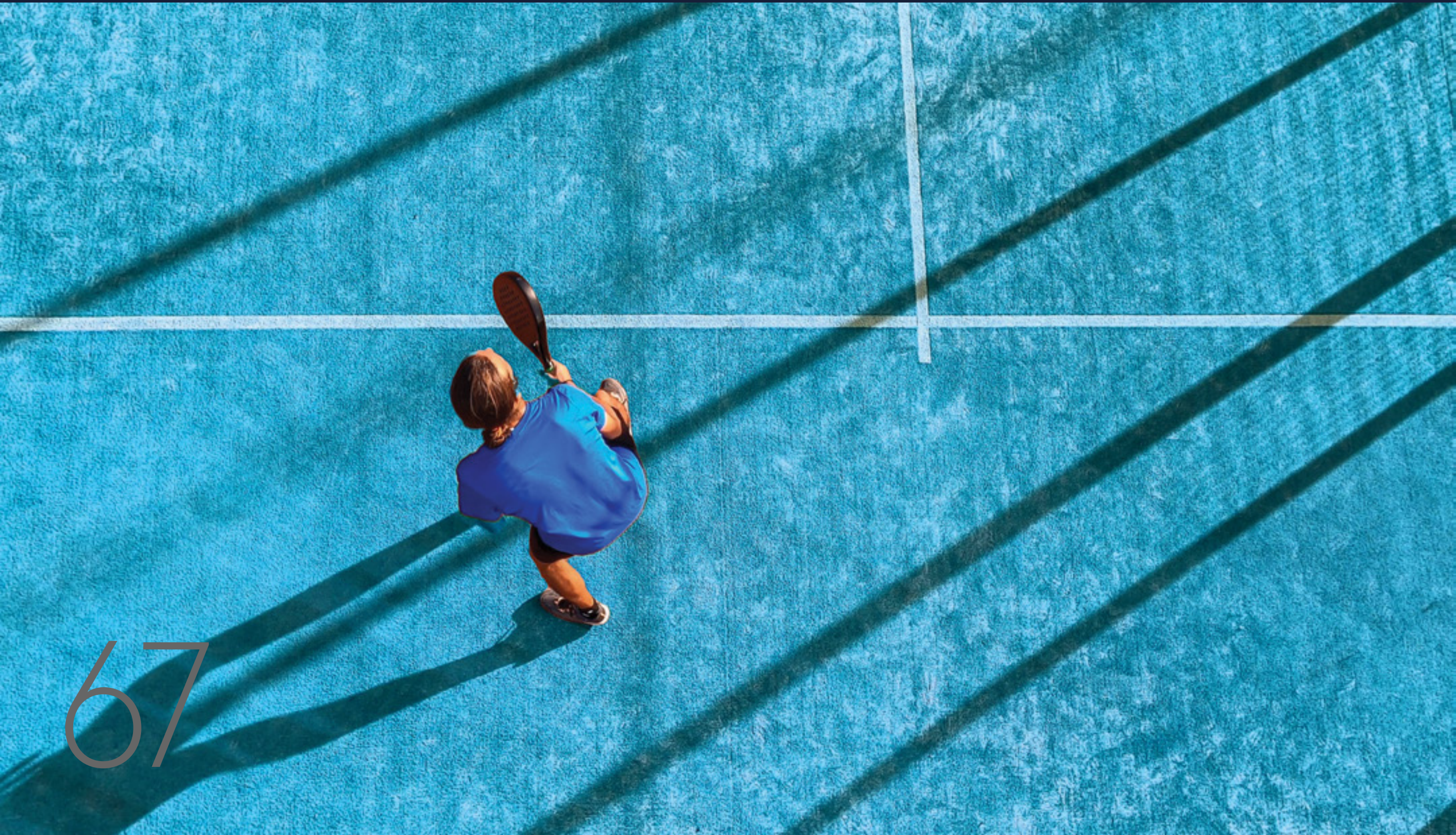




# Soma Sports Arena

The state-of-the-art Soma Sports Arena is a one-stop destination for sports enthusiasts and families, offering a wide range of world-class facilities designed to cater to all age groups and interests. The arena is a sprawling complex that harmoniously blends recreation, fitness, and entertainment; providing an exceptional experience to its members and visitors.

GYM Energize your body and spirit at our state-of-the-art gym in Somabay. Equipped with cutting-edge fitness equipment and expert trainers, you'll find everything you need to stay active and motivated during your stay. Whether you are a fitness enthusiast or just looking to maintain your routine, our gym provides the perfect space for your workout goals.





# Somabay Hotels

Somabay opens your eyes on a variety of hospitality options to suit every need. From design-led hotels to budget accommodation with impeccable service, the destination guarantees a memorable stay, as well as signature treatment all year.

---

Kempinski Somabay

---

Sheraton Somabay

---

The Cascades Golf Resort,  
Spa & Thalasso

---

Robinson Club

---

The Breakers





# 7 Bft The Kite House.

Spend your day gliding across flat idyllic waters at one of the top 3 Kite Surfing spots in the world, offering 365 days of incomparable wind and natural beauty to inspire.

Opening onto a tranquil bay, Somabay embraces pristine beaches and perfect off-shore and side shore winds ranging from 4 to 8 Bft. 7Bft's professional team of instructors are committed to making your kite experience safe, fun and complete by offering exclusive teaching and testing weeks with the latest equipment.

The Kite house is an ideal sea-side escape, offering everything you need from fresh food and refreshing cocktails, as you take in heavenly bay views from the restaurant or bar's open terrace.





# ORCA Dive Center.

Escape for hours at sea with ORCA Dive Center and allow Somabay's captivating dive sites and renowned colorful House Reef to leave you in awe. Ideal for beginners and advanced divers alike, our purpose-built diving center is one of the largest and most well-equipped in the Red Sea, led by an international team of instructors who ensure you explore a treasure trove of wonders with safety and ease.

Easily accessible via a 420 meter long jetty that stretches over a kilometer, the House Reef is serviced by electric cards, available to transport equipment and divers for an ultimate fun and hassle-free experience like no other. Boasting a large turquoise-blue lagoon with sheltered waters ideal for training, ORCA dive center is fully equipped with top-of-the-line gear, in addition to snorkeling equipment, in-house photo and video facilities to meet all the needs of the avid underwater photographer and explorer.





# The Cascades Spa & Thalasso.

Luxury award winner 'The Cascades Spa & Thalasso' invites you to uncover the most exquisite spa experience in the Middle East. Rolling out on 7,500 m<sup>2</sup>, the spa is an oasis of calm, crowning a front-row seat on the Red Sea's pristine coastline while boasting 65 treatment rooms spanning traditional massages, beauty treatments, hydrotherapy and aesthetic procedures. Take a plunge in our 830 m<sup>2</sup> Thalasso-Tonic hydrotherapy pool and allow the wonders of the Red Sea to restore balance to your mind, body and soul.





# Somabay Marina

Somabay's comprehensive Marina is a peaceful haven for immaculate sea views and a unique location for nautical fans wishing to dock their boats at a competitive price. Boasting world-class services and conditions for mooring, the Marina offers a wide array of quality services and facilities directly available at quayside, so you can enjoy sailing smoothly through life.







SOMABAY

DISCOVER  
SOMABAY

---

4A Hassan Sabry St. Zamalek, Cairo, Egypt.

---

Capital Business Park, Building B4, 26<sup>th</sup> of July Corridor,  
1<sup>st</sup> floor, Sheikh Zayed, Giza, Egypt.

---

Postal Code. 41516, Somabay office

16390

---

somabay.com

---

discoversomabay.com